

The background of the slide is a blurred, close-up photograph of green grass, likely wheat or barley, with a soft bokeh effect. The colors range from light green to a darker, muted green. A white rectangular border is centered on the slide, enclosing the main title text.

CORINE LAND COVER PROJECT

Monitoring Europe's Changing Landscapes

ABOUT

Stands for **C**oordination of **i**nformation on the **e**nvironment. It was launched in effort to develop a standardized methodology for producing continent-scale land cover and the first product was produced in 1990. The main focus is monitoring land use changes, assessing environmental conditions, and helping policymakers make informed decisions on land management



KEY OBJECTIVES

MONITOR CHANGES IN LAND COVER

over time to understand environmental impacts

SUPPORT EUROPEAN POLICIES

related to environment, agriculture, spatial planning, and biodiversity

PROVIDE HARMONIZED AND COMPARABLE DATA

on land cover across Europe

AID DECISION-MAKING

for sustainable land use and environmental protection

ACHIEVEMENTS

COVERAGE

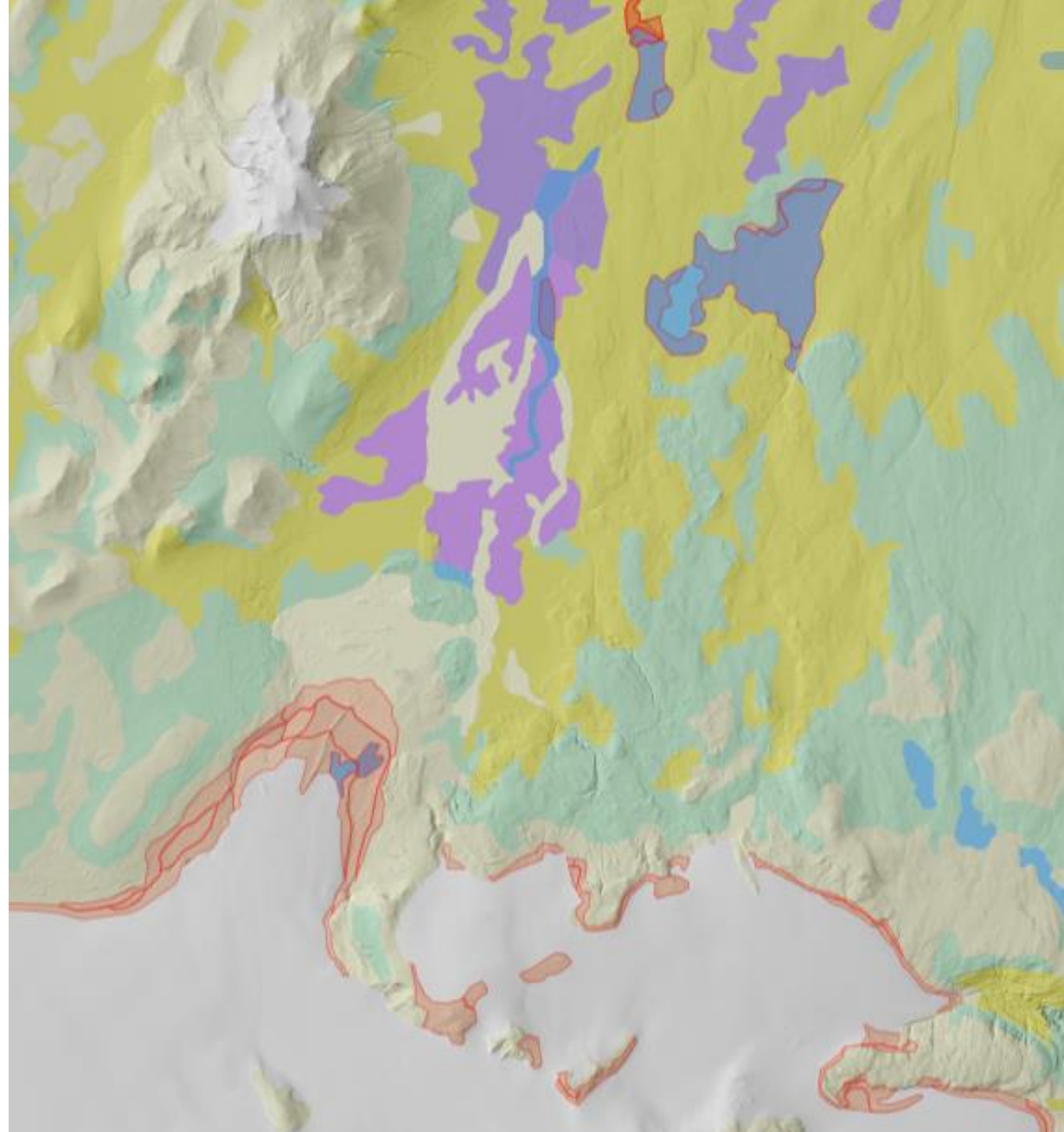
The project has been operational since 1990, with several updates (1990, 2000, 2006, 2012, 2018)

IMPACT

CORINE data is used in numerous environmental assessments and reports, such as tracking urban sprawl, deforestation, and land degradation

INTERNATIONAL COOPERATION

A key component of the Copernicus Land Monitoring Service which is part of the EU's Earth Observation Program





HOW CORINE WORKS



DATA COLLECTION



METHODOLOGY

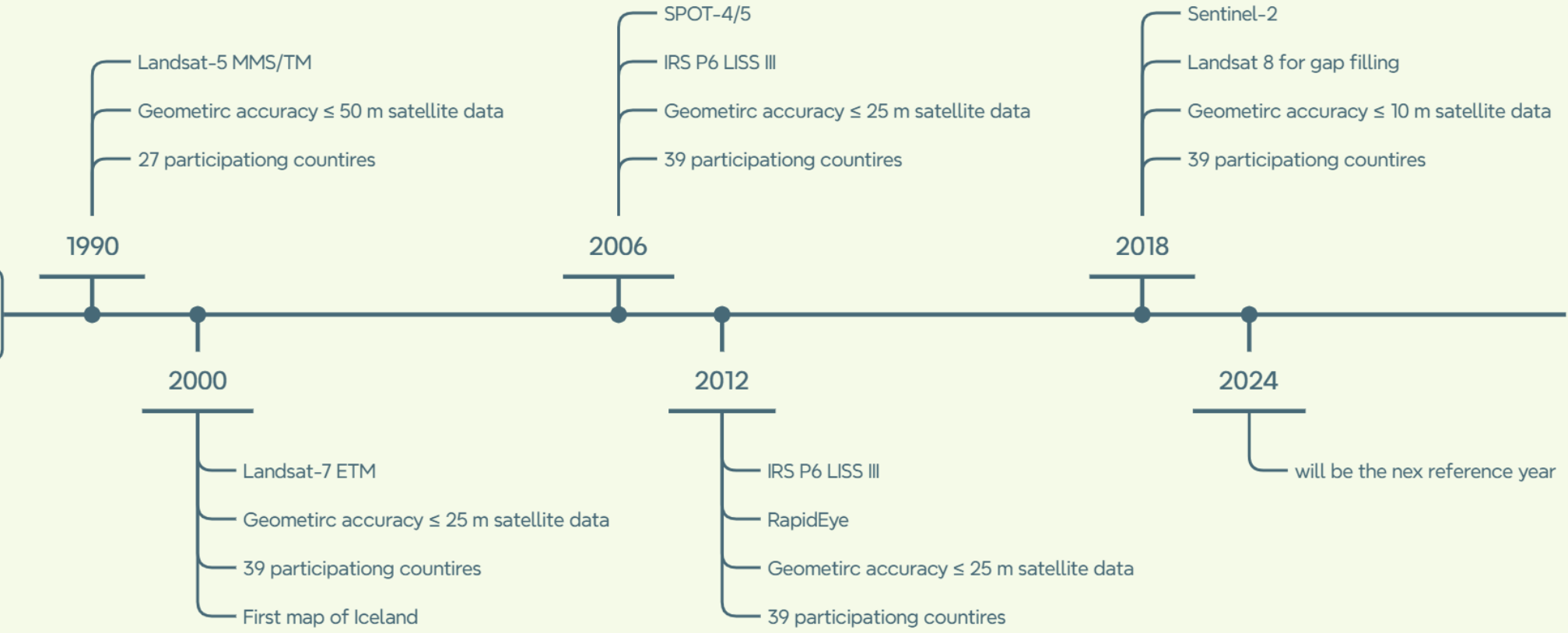


QUALITY CHECK



METHODOLOGY FOR 2024

Timeline



METHODOLOGY

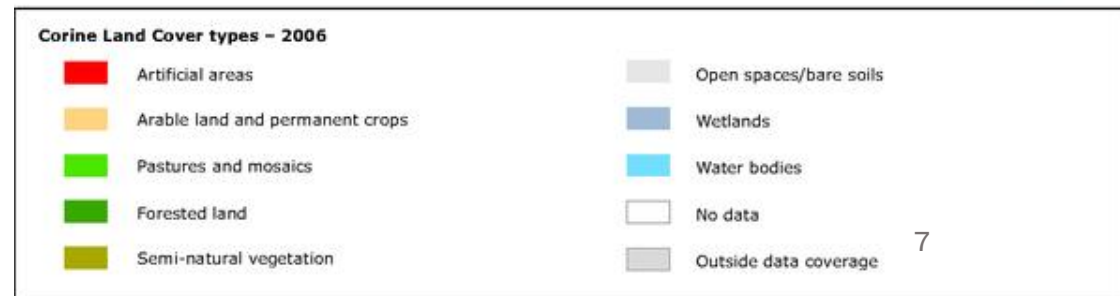
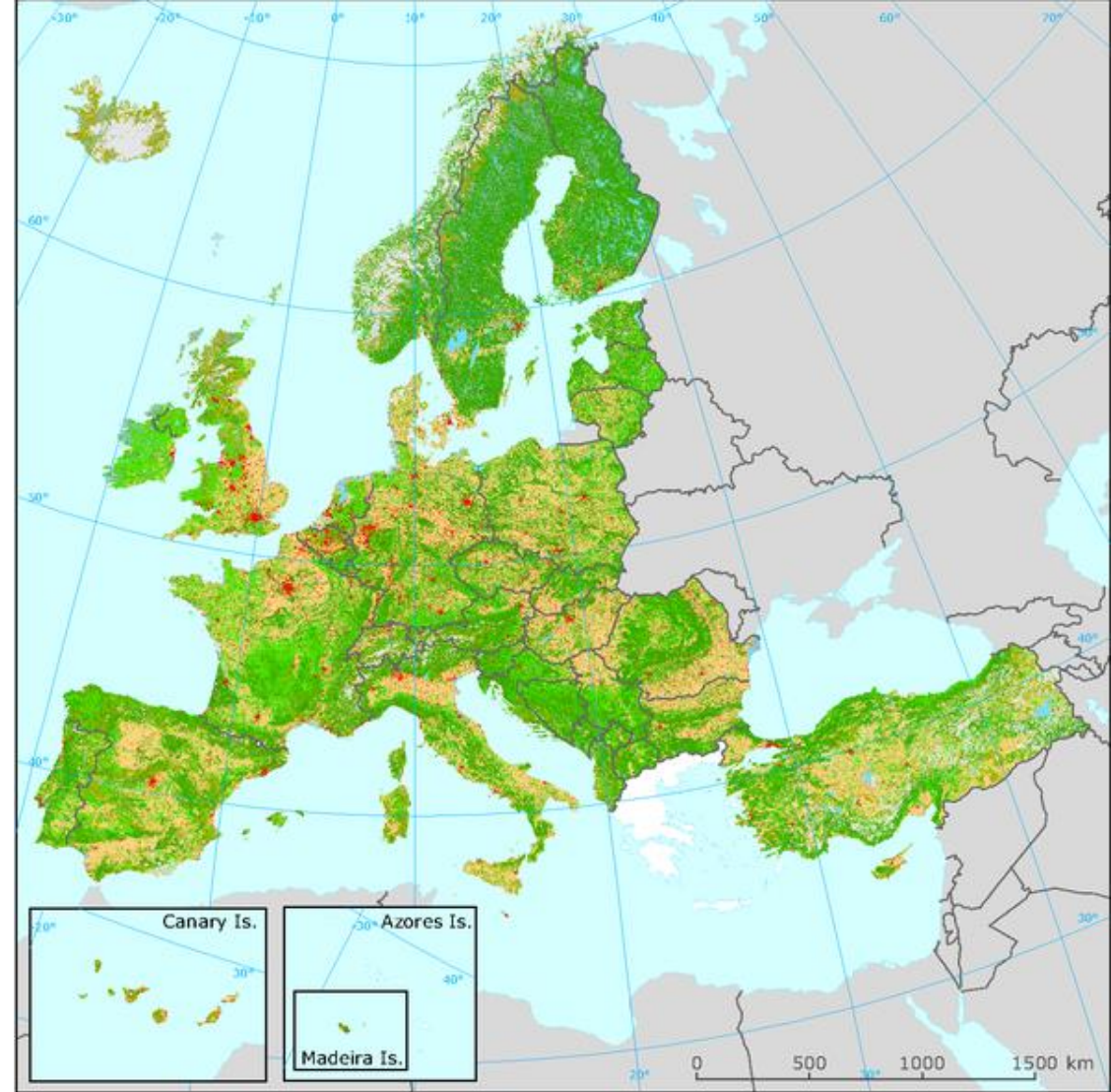
- Scale 1:100 000
- smallest mapped units or areas are 25 hectares
- the smallest mapped changes are 5 hectares in size
- the narrowest features are 100 meters wide

- classified into 5 basic categories
- divided into 44 different land types
- 32 of these land types are found in Iceland

QUALITY CHECK OF IMAGE ANALYSIS

- comparing IMAGE2018 and IMAGE2024 alongside the results of CLC2018 (vectordata) on a split computer screen

- all participating countries work with a specific software tool called InterCheck, which was developed specifically for this purpose



METHODOLOGY FOR 2024

COMPARE
IMAGES
2018/2024

records all visible changes larger than 5 hectares that have occurred since 2018

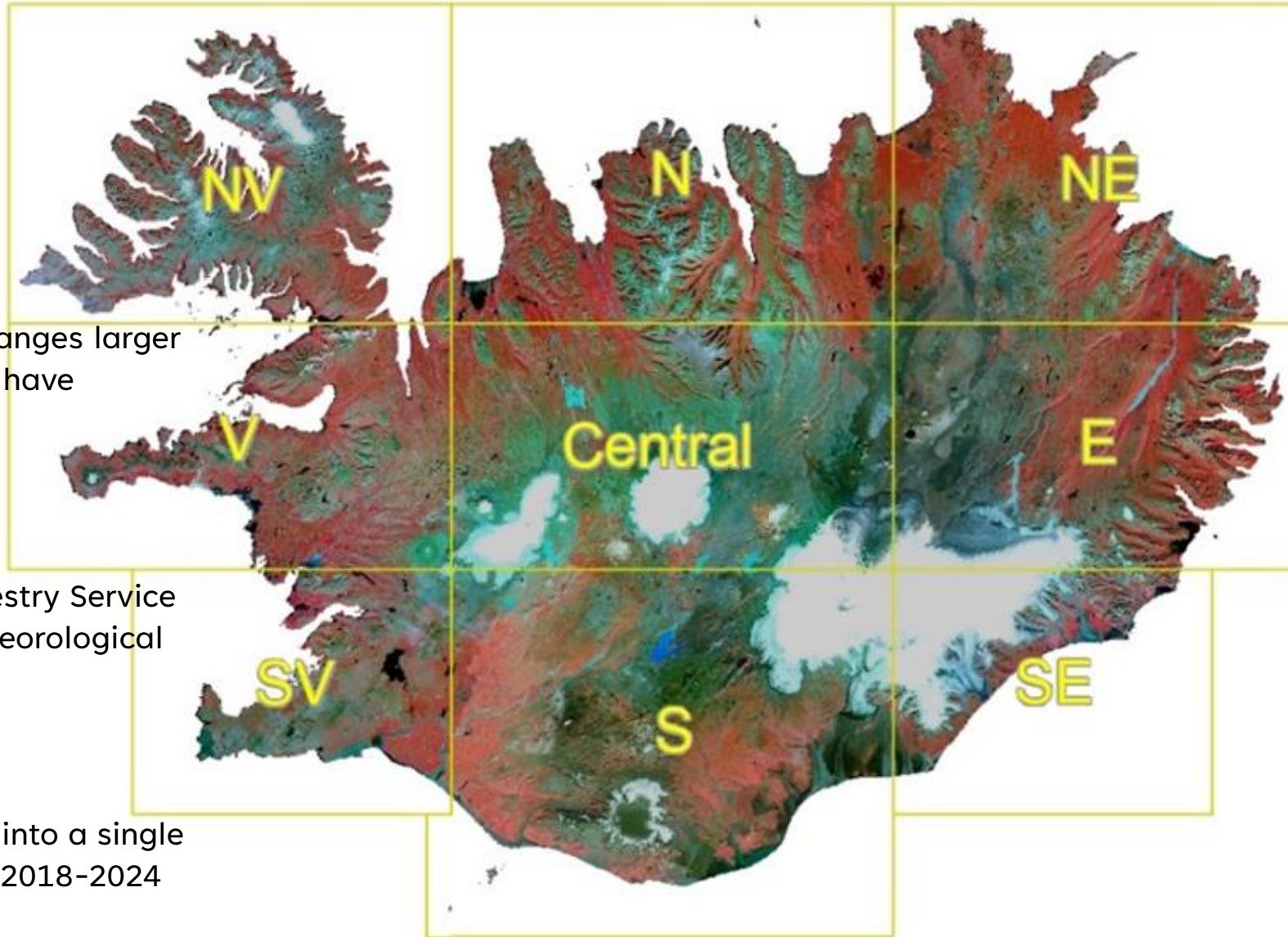
USE DATA
FROM
OTHER
SOURCES

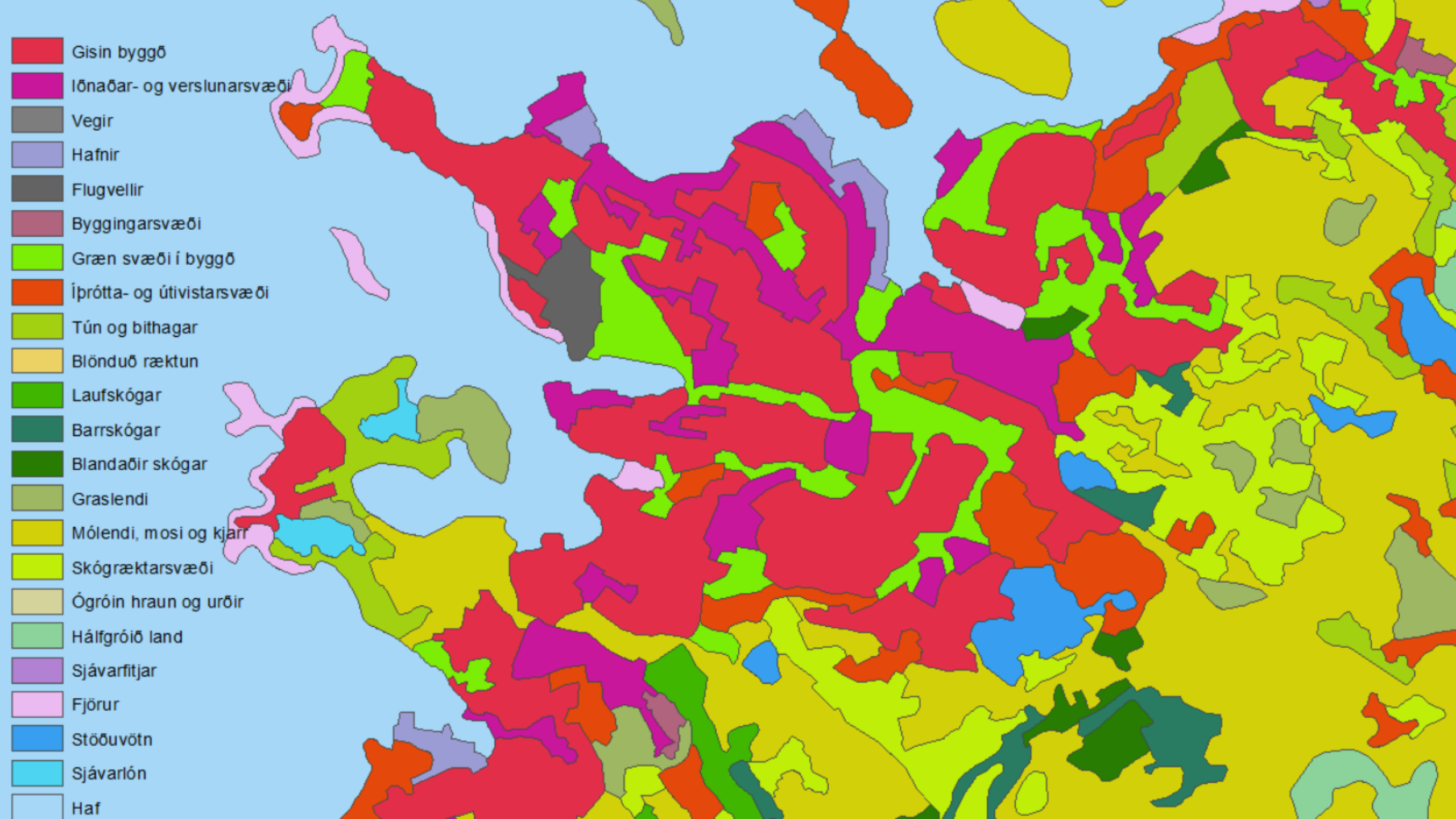
Datasets from

- the Icelandic Forestry Service
- the Icelandic Meteorological Office and more

REVIEW/
QUALITY
CHECK

results are compiled into a single change record, CLCC2018-2024

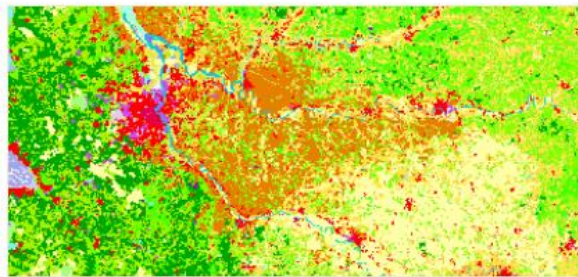




WHERE TO GET THE PRODUCT?



CLMS PORTFOLIO



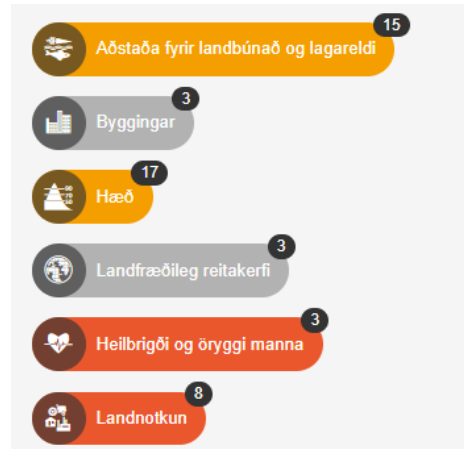
CORINE Land Cover

CORINE Land Cover is a pan-European land cover inventory with 44 thematic classes. Initiated in

<https://land.copernicus.eu/>



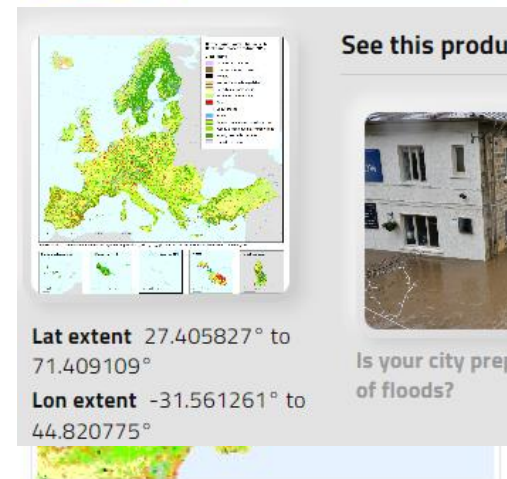
LÝSIGAGNAGÁTT



<https://gatt.natt.is/>



GEE



<https://developers.google.com/earth-engine/datasets/catalog/>



WEKEO

<https://www.wekeo.eu/>



<https://livingatlas.arcgis.com/>

SUMMARY

Summary: CORINE Land Cover is a cornerstone in monitoring Europe's environmental landscape, providing critical data for policymakers, scientists, and governments.

Future: With CLC+, there will be a clear distinction between land cover and land use (an issue that has caused confusion in the CLC classification).